

MATERIAL PROPERTIES TRESPA ATHLON

Properties	Metric Value	US Value	Standard
Physical properties			
Specific gravity	≥ 1,350 kg/m ²	≥ 84 lbs/ft ²	ISO 1183
Water absorption	≤ 1.0 % weight		EN 438
Dimensional stability	≤ 2.5 mm/m	≤ .03 in/ft	EN 438
Weight			
Thickness 6 mm (1/4 in)	8.5 kg/m ²	1.7 lbs/ft ²	
Thickness 8 mm (5/16 in)	11.0 kg/m ²	2.25 lbs/ft ²	
Thickness 10 mm (3/8 in)	14.0 kg/m ²	2.87 lbs/ft ²	
Thickness 13 mm (1/2 in)	18.5 kg/m ²	3.8 lbs/ft ²	
Thickness 16 mm (5/8 in)	22.5 kg/m ²	4.6 lbs/ft ²	
Thickness 20 mm (3/4 in)	28.0 kg/m ²	5.7 lbs/ft ²	
Thickness 25 mm (1 in)	35.0 kg/m ²	7.2 lbs/ft ²	
Panel tolerance			
Length & Width	- 0.0/+5 mm	- 0.0/+0.2 in	
Thickness	± 0.4 for 6 mm ± 0.5 for 8 and 10 mm ± 0.6 for 13 mm ± 0.7 for 16 mm ± 0.8 for 20 and 25 mm	± .016 for 1/4 in ± .020 for 5/16 and 3/8 in ± .024 for 1/2 in ± .028 for 5/8 in ± .031 for 3/4 and 1/2 in	
Optical properties			
Resistance dry heat			
Gloss	5 (= no changes)		EN 438
Color	5 (= no changes)		
Cracking	5 (= no changes)		
Mechanical properties			
Modulus of elasticity	≥ 9,000 N/mm ²	≥ 1,300,000 psi	ISO 178
Tensile strength	≥ 70 N/mm ²	≥ 10,000 psi	ISO 527-2
Flexural strength	≥ 100 N/mm ²	≥ 14,500 psi	ISO 178
Resistance to impact by large diameter balls	≤ 10 mm	≤ .04 in	EN 438
Scratch resistance	≥ 3 Rating		EN 438
Wear resistance			
Initial point	≥ 150 Revolutions		EN 438
Wear value	≥ 350 Revolutions		
Chemical properties			
Resistance to staining	5 Rating		EN 438

Region	Fire classification	Standard
North America	Type FR: Flame Spread 10	UL listing BLBT building units
	Type Standard (Non-FR): 6-10 mm: Flame spread 50 13 mm: Flame spread 30 16-25 mm: Flame spread 25	UL listing BLBT building units
European Union	Type FR: Flame Spread 10	ULC listing BLBT7 building units
	Type Standard (Non-FR): 6-10 mm: Flame spread 55 13 mm: Flame spread 30 16-25 mm: Flame spread 30	ULC listing BLBT7 building units
European Union	Type FR: Euroclass B-s2, d0	EN 13501-1
	Type Standard (Non-FR): Euroclass D-s2, d0	EN 13501-1
Smoke generation		
North America	Type FR: Smoke developed 45-75	UL listing BLBT building units
	Type Standard (Non-FR): 6-10 mm: Smoke developed 300 13 mm: Smoke developed 85 16-25 mm: Smoke developed 70	UL listing BLBT building units
European Union	Type FR: Smoke developed 45-75	ULC listing BLBT7 building units
	Type Standard (Non-FR): 6-10 mm: Smoke developed 300 13 mm: Smoke developed 85 16-25 mm: Smoke developed 70	ULC listing BLBT7 building units

Region	Status	Approval Qualification
North America	New York City- Product accepted	MEA 222-01-M
Region Emissions IAQ Certification Detail		
North America	GREENGUARD® GREENGUARD® Children & Schools	FC2lp94711-2 FC2lp94711-2

Please check www.trespa.com for the latest version of the material properties and delivery program.

DELIVERY PROGRAM TRESPA ATHLON

Panel size (mm)	IF (3050 x 1530)		SF (2550 x 1860)		XF (3730 x 1860)	
Panel size (inch)	IF (120 x 60)		SF (100 x 73)		XF (146 x 73)	
Surface texture	QZ/QZ*	CR/CR**	QZ/QZ	CR/CR	QZ/QZ	CR/--
Panel thicknesses (mm)	6,8,10,13	6,8,10,13,16,20	6,8,10,13	6,8,10,13,16,20	6,8,10,13	6,8,10,13,16,20
Panel thicknesses (inch)	1/4,5/16,3/8,1/2	1/4,5/16,3/8,1/2,3/4	1/4,5/16,3/8,1/2	1/4,5/16,3/8,1/2,3/4	1/4,5/16,3/8,1/2	1/4,5/16,3/8,1/2,3/4
Qualities	standard & FR		standard & FR		standard & FR	
Uni	Non Uni					
E000 E0-015 E0-02 E0-09 E1-01 E17-30 E17-32 E17-33 E17-52 E19-11 E20-12 E2-10 E2-11 E2-12 E2-31 E23-21 E25-01 E25-04 E3-01 E3-42 E7-52 E7-62						
E0-04 E1-215 E13-00 E15-54 E18-45 E2-01 E22-53 E23-53 E25-013 E25-02 E25-03 E3-11 E5-11	S000 S0015 S002 S17-30 S17-32 S19-11 S2-31 S20-12 S3-01 PA-2 CO09					
E6-53 E16-16	CB-2 CB-3 MC-1 MC-2 MC-3 SO-04 W71-03 W73-01 W74-01 W74-02 W76-01 W78-01 W80-01 W82-03 W85-02 W88-02					
	CB-1 CL-1 MC-3 PA-1 PA-3 PA-4 PA-5 PA-6 PL-1 PL-2 PL-3 PL-4 TF-1 TF-2					

■ Standard delivery - minimum quantity 1 panel [standard] / 1 pallet [FR].
 ■ On request (minimum quantity 40 panels).
 * QZ = Quartz is a surface structure with a fluid irregular texture, recommended for vertical applications.
 **CR = Crystal Matt is a very fine surface structure with a matt sheen, recommended for horizontal applications.
Disclaimer:
 All Trespa samples and all Trespa panels are produced within the specified tolerances. Samples and production panels do not originate from the same production batch. The color perception is by nature influenced by slight variations in pigments used as well as by the angle of observation.

Trespa International B.V.

Trespa International B.V. specializes in high quality panel material for facade cladding and interior use. Trespa has both the expertise and the means to develop products for specific segments of the market. Trespa is continually looking for ways to protect the environment even more effectively.

Trespa guarantees quality of both products and services. We offer our customers optimal technical support as well as straightforward documentation. Proof of this approach is the award of the ISO 9001 and ISO 14001 certificates.



Whatever your requirements, Trespa offers a full support service. Please contact us for further information.

Conditions of Sale

To all our offers, quotations, sales, deliveries and supplies and/or agreements, and to all related services and activities the

Trespa North America Ltd.

12267 Crosthwaite Circle
 Poway, CA 92064
 Tel: 1-800-4-TRESPA
 Fax: 1-858-679-0440
 info@trespanorthamerica.com

Trespa New York Design Centre

62 Greene Street (Ground Floor)
 New York, NY 10012
 Tel: 1-212-334-6888
 Fax: 1-866-298-3499
 info.ny@trespa.com

Trespa International B.V.

P.O. Box 110, 6000 AC Weert
 Wetering 20, 6002 SM Weert
 The Netherlands
 www.trespa.com

Trespa International B.V. General Conditions of Sale apply, filed at the Venlo Chamber of Commerce on 11 April 2007, registered under number 24270677, and appearing on the website at www.trespa.com. The text of these General Terms and Conditions will be sent to you upon request.

Responsibility

We believe all information in this publication to be correct at the time of printing. It is intended as information concerning our products and their application possibilities and is therefore, not intended as any form of guarantee with regard to any specific product characteristic.

Colors

The colors in this document are printed, and therefore, may vary slightly from the original Trespa panel colors with respect to gloss, color shades and surface texture. Original samples are available on request.

Registered trademarks

® Trespa, Meteon, Athlon, TopLab, TopLab+, Virtuon, Volkern, Ioniq and Inspirations are registered

EMEA Export

Tel: 31 (0) 495 458 359 / 285
 Fax: 31 (0) 495 458 383
 infoexport@trespa.com

Trespa UK Ltd

Grosvenor House
 Hollinswood Road
 Central Park, Telford
 Shropshire, TF2 9TW
 Tel: 44 (0) 1952 290707
 Fax: 44 (0) 1952 290101
 info@trespa.co.uk

Trespa China Co. Ltd.

Room 2604-05, HuaiHai Plaza
 No. 1045 HuaiHai Road (central)
 ShangHai 200031, P.R. China
 Tel: 86 (0) 21 6288 1299
 Fax: 86 (0) 21 6288 1296
 infochina@trespa.com

trademarks of Trespa International B.V.

Copyrights

© All rights reserved. No part of this publication may be reproduced, stored in a retrieval system, or made public, in any form or by any means, either graphic, electronic or mechanical, including photocopying, recording or otherwise, without the prior written permission of Trespa International B.V.

Projects on cover:
 Arch. Heur & Faust, Germany.
 Arch. Community Technical Aid Centre, United Kingdom.

Asia/Pacific Sales Support

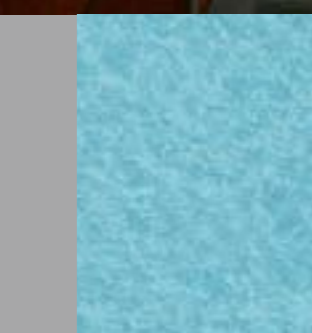
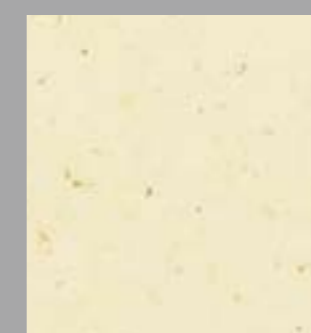
Tel: 31 (0) 495 458 812
 Fax: 31 (0) 495 458 383
 infoapac@trespa.com

CSD Asia/Pacific

Tel: 86 (0) 21 5465 8388
 Fax: 86 (0) 21 5465 6989

Trespa Singapore Pte Ltd.

UOB Plaza 1
 80 Raffles Place
 Level 35 Room 8
 Singapore 048624
 Tel: 65 6248 4613
 Fax: 65 6248 4501
 infoapac@trespa.com



Think Trespa

www.trespa.com

TRESPA®

TRESPA ATHLON

Trespa Athlon panels are specifically designed for interior applications. Their integrated decorative surface is designed for intensive use. It is impact, scratch and wear resistant. Panels are easy to keep clean and as they do not absorb or retain moisture they can be cleaned frequently, using standard cleaning agents and disinfectants.

Impact Resistant

The combination of a solid, homogenous core with a hard surface based on melamine resins gives Trespa Athlon exceptional impact resistance. This is confirmed by its day-to-day practical use as wall cladding in public rooms and rooms susceptible to vandalism, sanitary cubicles or as bumper rails in hospital corridors.

Scratch and Wear Resistant

The special surface structure and durability provide excellent scratch resistance. Even in heavy-duty use, Trespa Athlon retains its appearance for a very long time. The panel is highly resistant to wear, making it ideal for installation where heavy use and frequent cleaning are expected. Trespa Athlon is commonly utilized in office or scientific furniture applications.

Moisture Resistant

Trespa Athlon is not adversely affected by moisture and is not susceptible to discoloration, mold or rot. Both the surface and the core are manufactured using specific, thermosetting resins, which make them impervious to moisture. The dimensional stability and workability of Trespa Athlon are comparable to those of hardwood.

Safe Fire Behavior

Trespa Athlon is heat resistant and meets the requirements of national and international fire classifications for safe fire behavior. Due to the high density, Trespa Athlon ignites at relatively high temperature and carbonizes in a way similar to hardwood. The panel material does not melt, drip or explode and retains its stability for a long period of time.

The choice to use either standard modified panels or fire-retardant modified (FR) panels depends on the nature and the intended use of the building project. National and/or regional fire regulations are decisive in this respect.



Uni colors

E 0-015 Pastel Grey	
E 25-013 Ash Grey	
E 0-02 Silver Grey	
E 25-02 Opal Grey	
E 25-03 Zinc Grey	
E 0-04 Mid Grey	
E 0-09 Black	
E 16-16 Marine Blue	
E 18-45 Prussian Blue	
E 15-54 Ultra Marine	
E 17-52 Aqua Blue	
E 17-33 Brilliant Blue	
E 17-32 Powder Blue	
E 25-04 Steel Blue	
E 17-30 Heaven Blue	
E 19-11 Light Blue	
E 25-01 Icely Blue	
E 13-00 Cristal Pink	
E 2-01 Pearl White	

E 0-00 White	
E 2-10 Paper White	
E 3-01 Sand	
E 3-11 Light Ivory	
E 1-01 Ivory	
E 2-11 Stone Beige	
E 2-12 Mid Beige	
E 5-11 Soft Pink	
E 7-52 Carmine Red	
E 7-62 Poppy Red	
E 6-53 Orange Lead	
E 3-42 Gold Yellow	
E 2-31 Melon Yellow	
E 1-215 Pampus Yellow	
E 23-21 Pastel Green	
E 20-12 Aquamarine	
E 23-53 Grass Green	
E 22-53 Emerald Green	

Fantasy

S 0-00 White	
S 0-015 Pastel Grey	
S 0-02 Silver Grey	
S 0-04 Mid Grey	
S 3-01 Sand	
S 2-31 Melon Yellow	
S 19-11 Light Blue	
S 17-30 Heaven Blue	
S 17-32 Powder Blue	
S 20-12 Aquamarine	
PA-6 Patina Light Blue	
PA-5 Patina Turquoise	
PA-4 Patina Golden	
PA-3 Patina Orange Red	
PA-2 Patina Rusty Red	
PA-1 Patina Green	
PI-1 Grit Grey	
PI-2 Grit Blue Grey	

Wood Decors

W 71-03 Silver Maple	
W 80-01 Lime	
W 88-02 European Wild Apple	
W 74-02 Solid Oak	
W 74-01 Oak	
W 78-01 Wild Cherry	
W 85-02 Pear	
W 73-01 Beech	
W 82-03 Verona Walnut	
W 76-01 Highland Pine	

The colors in this document are printed, and therefore, may vary slightly from the original Trespa panel colors with respect to gloss, color shades and surface texture. Original samples are available on request.